



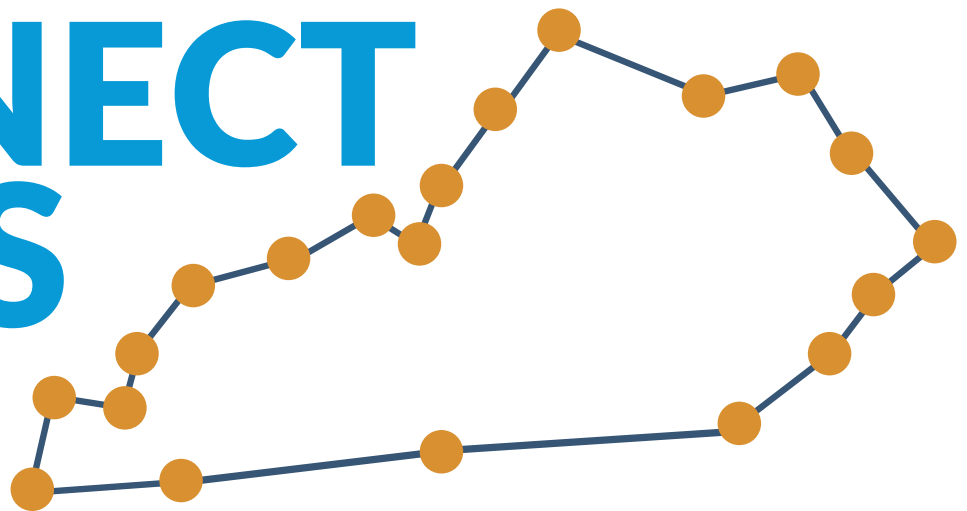
KSBA

KENTUCKY SCHOOL BOARDS
ASSOCIATION

Register online
at [KSBA.org](https://ksba.org)

CONNECT THE DOTS

2022 ANNUAL
CONFERENCE



Feb. 25-27



Kentucky International Convention Center



Louisville

Let's connect

Connections. As school board members, you make them every day in your schools, in your communities and with fellow members of your board teams. Connections allow us to be better together. To learn. To build bridges. To make unified decisions. To reach our common goals. By connecting with other public education advocates, on behalf of the students we serve, we all move forward together.

KSBA invites you to participate in the association's 2022 Annual Conference, where you can connect with your peers from across the commonwealth for a weekend of training, networking and inspiration. "Connect the Dots" celebrates the effectiveness of teamwork and the value of collegiality between all education stakeholders.

Conference Registration Form

School District

Full name and title (for badge)

Email*

Pre-conference workshop \$50 fee

Contact List Opt In**
(See box below for info)

Pre-conference workshop \$50 fee	Clinic Selections	Friday Box Lunch \$30 a person	Saturday Lunch \$40 a person	Sunday Brunch \$30 a person	Contact List Opt In** (See box below for info)
PC	A B C D E F				Yes, I agree No
PC	A B C D E F				Yes, I agree No
PC	A B C D E F				Yes, I agree No
PC	A B C D E F				Yes, I agree No
PC	A B C D E F				Yes, I agree No
PC	A B C D E F				Yes, I agree No
PC	A B C D E F				Yes, I agree No

*Please include individual email for each attendee

****Contact List Opt In:** I hereby agree to allow my contact information to be shared with other conference participants (including presenters, affiliates and exhibitors) for the purposes of receiving educational and promotional information in advance of and/or following the 2022 KSBA Annual Conference.

REGISTRATION INFORMATION

The conference registration fee is \$375 per board member or administrator, which includes admission to all general sessions, clinic sessions, the Friday night Exhibitors' Reception and the Saturday Exhibitors' Continental Breakfast. The fee does not include meals or Friday pre-conference workshops. Tickets must be purchased for Friday's box lunch, Saturday's lunch and Sunday's brunch by 5 p.m., Friday, Feb. 11.

Each registrant should pre-register for clinic selections and pre-conference workshops in the space provided above. Specify the number of each clinic, conference workshop and meal the registrant will attend (Example: A3, B2, C4). Workshops are available on a first-come, first-served basis, so plan on arriving early to secure a seat.

Complete the form above and mail with your payment to: Conference Registration, Kentucky School Boards Association, 260 Democrat Dr., Frankfort, KY 40601, or register online at KSBA.org. Forms may be faxed to 502-783-1182. (See page 4 for hotel information)

Cancellations for refunds must be received in writing by Feb. 11. After this date, there is a cancellation fee of \$100.

Additional email to receive the registration confirmation:

Payment Section

Friday pre-conference workshops x \$50 =
 Conference registration x \$375 =
 Friday box lunch x \$30 =
 Saturday lunch x \$40 =
 Sunday brunch x \$30 =
TOTAL \$

P.O. No. _____

**Payment by credit card is available
online at KSBA.org**

GENERAL SESSION SPEAKERS

OPENING SESSION

Friday, Feb. 25, 1 – 3 p.m.

1.25 hours training credit

Motivation by Chocolate

This keynote by **Denise Ryan** features two things everyone likes – chocolate and motivation! It teaches nine key concepts to help you get more out of work and life. You'll learn about persistence, passion, the law of diminishing returns, and much more! You'll even get insight into your leadership style and learn which famous chocolate maker you are most like. The session includes a chocolate tasting to demonstrate not only how to appreciate chocolate, but also life itself. Being a school board member just got a whole lot sweeter!



LUNCH/PLENARY SESSION

Saturday, Feb. 26, 11:45 a.m. – 1:45 p.m.

1.25 hours training credit

Project iGuardian

Project iGuardian is presented by the U.S. Department of Homeland Security, Homeland Security Investigations (HSI). Project iGuardian is an HSI initiative “designed to inform youths, parents, and educators about the risks that children face in the online environment” that also “aims to arm parents with knowledge and resources to help protect their children.” HSI, which is the investigative arm of the U.S. Department of Homeland Security, partnered with the National Center for Missing & Exploited Children to create much of the presentation. This session, presented by Homeland Security special agents **Jonathan A. Hendrix** and **Theodore R “Derek” Curtis III**, will also give example scenarios based on local investigations to help parents, teachers, and other law enforcement better understand how children can become victimized online and what to do if this occurs. Some of the risks discussed in this presentation are online predators and social media, revealing too much, cyberbullying and the dangers of social media apps.



BRUNCH SESSION

Sunday, Feb. 27, 8:30 – 10:15 a.m.

1.25 hours training credit

Detour: Winning When Life Doesn't Go According to Plan

Hard work usually pays off. But sometimes, no matter how hard you work, your plans just... DON'T work. Resilience researcher **Courtney Clark** helps teams adapt to change and crisis when the stakes are high, and she has proven techniques to help you deal with life's detours with humor, resilience and tenacity. In this inspiring and interactive presentation, you'll learn a multi-step framework for creating optimal outcomes in uncontrollable situations. At the end of this session, participants will be able to...

- Discover how to let go of “the plan.”
- Identify ways to maintain personal power during transition and upheaval.
- Develop measures to increase perspective and adaptability.



REGISTER ONLINE

Registration for KSBA's 2022 Annual Conference is available at [KSBA.org](https://www.ksba.org) with our clear and easy to follow online registration system. Registrants can access the Annual Conference 2022 link on our website's home page.

PRE-CONFERENCE WORKSHOPS

Friday, Feb. 25
9 a.m. – Noon

These workshops are for all school board members and administrators regardless of experience.
Registration fee: \$50 per person for each workshop.

PC1 All Together Now

Looking for a convenient way to earn credit in the mandated topics of ethics, finance and superintendent evaluation? Attend this session to learn important information while working toward meeting annual requirements. This session is open to members of any length of service. Special one-hour versions of these workshops are included:

- **Board Member's Dashboard** (*Counts toward mandated finance training requirement*)
- **Board Leadership Essentials: Your Public Image** (*Meets mandated ethics training requirement*)
- **Using Formative Conversations to Improve Superintendent Evaluation** (*Meets mandated superintendent evaluation training requirement*)

PC2 Finance 1A, 1B, II

Meets mandated finance training requirements (3 hours)

School board members in their first term of office are required to receive three hours of finance training. Attendance at this session will not only meet that requirement but provide information on the basics of school finance and how effective use of finances can assist the district in reaching its goals.

- **School Board Fiscal Responsibilities: Driving Success Through Informed Decisions - Part IA**
- **School Board Fiscal Responsibilities: Driving Success Through Informed Decisions - Part IB**
- **Finance II: Dollars and Sense**

PC3 School Safety and Resiliency Act (SB 1/SB 8): Update, Review and Threat Assessment Team Implementation Overview

A/S Level IV/V elective credit

Pandemic concerns and NTI adjustments have dominated the educational landscape across our nation for much of this school year. But other concerns cannot be forgotten, it is essential to review the important aspects of the School Safety and Resiliency Act, including the training requirements for threat assessment team implementation at every public school in our Commonwealth. This session will provide participants with helpful reminders and some new information regarding essential requirements of Senate Bill 1 and Senate Bill 8. As always, the Kentucky Center for School Safety offers this training to every district in Kentucky.

Dan Orman, training coordinator, Kentucky Center for School Safety

PC4 Dealing with External Media

A/S Level V required course

District leaders are regularly called upon by the media to comment on important board decisions, district developments and school crises. Be prepared! This interactive session will discuss the board's role in public relations, the value of prepared talking points, effective media interviews and the best ways to take (and maintain) control of the story.

Josh Shoulta, director of communications, Brenna Kelly, publications manager, KSBA

Reserve your hotel room today

Special room rates are available for conference attendees at the following hotels. Hotels are conveniently located near the convention center, in some cases even connected by pedestrian walkway or parking garage.
(Note: Special rate room blocks are only offered for a limited time. Make reservations now!)

Host hotels:

(reserved for board members/superintendents)
Louisville Marriott Downtown
Hyatt Regency Louisville

Additional overflow hotels:

(reserved for overflow and exhibitors)
SpringHill Suites Louisville Downtown
Fairfield Inn & Suites Louisville Downtown

More info and hotel links can be found at [KSBA.org](https://ksba.org)

Superintendents who plan to check in or out for their group should tell the hotel at the time reservations are made.

A1 School Board Fiscal Responsibilities: Driving Success Through Informed Decisions-Part IA

Counts toward mandated finance training requirements

A/S Level III required topic: Finance

F This is the first of a two-part session that examines the “big picture” of school finance. Topics include the board’s basic responsibility in financial matters, a review of basic terminology, fund accounting, components of the general fund, an overview of the SEEK (Support Education Excellence in Kentucky) formula, and an explanation of the budget process.

KSBA Training Cadre

A2 Corruption and the FBI: How a Local School District Worked with the FBI to Overcome Corruption

Counts toward annual finance training requirements

A/S Level III required topic: Finance

F FBI officials will talk about how they investigate public corruption and how anyone on a government payroll (city, county, state or federal) is a public official. Officials will also discuss various corruption schemes they investigate and what gives the FBI jurisdiction over lower-level government officials. It will emphasize the importance of contacting the FBI if discovering information involving corruption and will provide a general overview of the FBI’s role in Kentucky. Also, hear from a district on how it dealt with embezzlement and worked with the FBI to overcome it.

T.J. Hanna, senior supervisory resident agent, Chelsea Holliday, special agent, FBI Louisville-Lexington RA; Mark Kopp, superintendent, Franklin County Schools

A3 The Core of Good School Board Governance: Adopting Higher Level Practices

Counts toward mandated ethics training requirement

A/S Level I required topic: Ethics

E Once school board members learn their legal roles and responsibilities, they should adopt higher level practices of effective decision-making and leadership. The core of good school board governance focuses on those practices through adopting a mindset for governing, developing a strategic focus and building a united board/superintendent team that will work together to achieve success for all students.

KSBA Training Cadre

A4 Using Formative Conversations to Improve Superintendent Evaluations

Meets mandated superintendent evaluation training requirement

A/S Level II required topic: Superintendent Evaluation

S You don’t have to wait until the end-of-the-year superintendent evaluation session to monitor progress on goals. In fact, you will ensure a more productive evaluation if you schedule formative sessions throughout the year to make sure your system is focused on the goals you have set. Kentucky law provides the opportunity for boards to have closed sessions for this purpose. Hear how making superintendent evaluations a year-round endeavor can ensure focus on goals and reduce the stress of waiting until the last minute to address a year’s worth of questions and pent-up concerns.

KSBA Training Cadre

A5 Serving Your Most In-Need Students: Jobs for Kentucky’s Graduates (JAG KY)

A/S Level I required topic: The Board’s Role in Student Achievement

Want to see your high schools connect even more with your communities? Want to see your students focused on jobs/careers? How about a 100% graduation rate among your most in-need students? Come see how you can add a JAG KY Program to your high school. This game changer is awaiting your students, who need additional support to focus on success during school and after graduation.

George Stafford and Marcie Hanson, co-executive directors, Jobs for Kentucky’s Graduates; Stephen McCauley, superintendent, Paris Independent Schools

A6 We Grow Together: Sustaining Dolly Parton Imagination Library

A/S Level II required topic: Student Learning & Support Services

The Campbell County Public Library and local school districts partnered to establish and sustain a successful Dolly Parton Imagination Library (DPIL). In Campbell County, 55% of eligible preschool children participate compared to the state DPIL average of only 15%. Learn how to build a successful DPIL of your own! *Kim Fender, board member, Campbell County Schools; JC Morgan, library director, Campbell County Public Library; Jay Brewer, superintendent, Dayton Independent Schools*

A7 Communicating in Stressful Times: Five Things Your People Need from You

A/S Level II required topic: Employee Relations/School Personnel

How do you keep employees engaged and productive? Employees need things when everything is good, but as leaders, meeting their needs when things are tough can make or break your district. Come explore five things employees need during difficult times and what leaders need to do to meet those needs.

Megan Garton, territory development executive, American Fidelity

A8 Bonding Info for School Districts: Building Your Knowledge

A/S Level II required topic: School Facilities

This session will connect the dots on how bonding potential for a school district is calculated and what impacts your bonding both positively and negatively. Come learn with us.

Mark Rawlings, public banker, R.W. Baird Financial

A9 Improving the Health of Students Through State Nutrition & Physical Activity Requirements

A/S Level III required topic: Student Health & Wellness

This session will provide participants with a full understanding of state laws and regulations (KRS 160.345(11), KRS 158.856 and 702 KAR 6:090) which require assessment and reporting of the school nutrition and physical activity environments. Find out what is required, resources for implementation, and how to use this process to improve the health of your students and staff.

Stephanie Bunge, school health consultant, Division of District Support, Kentucky Department of Education

B1 School Board Fiscal Responsibilities: Driving Success Through Informed Decisions-Part IB

Counts toward mandated finance training requirements

A/S Level III required topic: Finance

F This is the second of a two-part session that examines the “big picture” of school finance. Topics include school-based decision-making council allocations, audits and the audit process, and an overview of key financial reports of the district.

KSBA Training Cadre

B2 Making Sense of Dollars: Presenting Financial Information to Non-Financial Audiences

Counts toward mandated finance training requirements

A/S Level III required topic: Finance

F If you think school finance is a tough topic to tackle, consider how mind-boggling it is for the people who pay the taxes that fund your programs. This class developed with help from members of the Kentucky Association of School Business Officials offers ideas and calendar opportunities to spell out school budgets and taxes to the community.

KSBA Training Cadre

B3 Breaking Terrible Board Habits Part 1

Counts toward mandated ethics training requirement.

A/S Level I required topic: Ethics

E This session is based on the book “How Not to Be a Terrible School Board Member,” by Richard Mayer, a longtime local school board member and educational psychologist. The book takes an often-humorous approach to identifying and correcting behaviors that impede the important work of school boards. Some of Mayer’s “terrible habits” include humiliating a district employee in public, coming unprepared to board meetings, arguing with a hostile speaker, taking political stands and more. This session will look at some of those terrible habits and how they can be avoided.

KSBA Training Cadre

B4 Superintendent Evaluation: Setting and Meeting Goals

Meets mandated superintendent evaluation training requirement.

A/S Level II required topic: Superintendent Evaluation

S Staying focused on goals is the secret to success. Too often, we get sidetracked by unexpected events and when we sit down to assess our progress, we realize how little attention we paid to those goals. Superintendents and boards of education need to agree on annual goals that are relevant and clear, so they can evaluate progress properly. Learn how setting goals as part of the superintendent evaluation process can keep the district on track for success.

KSBA Training Cadre

B5 Look in the Mirror: Board Member Self-Evaluation

A/S Level III required course

School boards evaluate the performance of the superintendent. They monitor finances, programs and policies. But they don’t always take a critical look at themselves. High-performing school boards know that the only way to build on strengths and address challenges is to examine their own governing performance. This session discusses the process that uses current, research-based school board effectiveness standards to help any board function more efficiently and effectively.

KSBA Training Cadre

B6 Utility Rate Crisis: How One Kentucky District Addressed One Big Problem

A/S Level II required topic: School Facilities

Attendees can expect to learn about how Owensboro Independent Schools leveraged utility dollar savings to prepare their district’s HVAC systems for a global pandemic and how an energy savings project identified a great opportunity to install Solar PV across the district to help fund the replacement of the HVAC equipment.

Salvador Loc, project manager, CMTA Energy Solutions; Chris Bozarth, director of maintenance/facilities and technology, Owensboro Independent Schools

B7 Building Schools in Kentucky

A/S Level II required topic: School Facilities

You have choices for your construction project. Procurement is important in a project’s success in both the construction and design phases. Procurement models adopted for a project have their advantages and disadvantages. Join this session to learn about the procurement methods for building schools with the Kentucky Department of Education.

Thomas Gumm, founder/CEO, Alliance Corporation; Kerry Young, board member, Warren County Schools

B8 FCPS STEAM Academy: A New Model for Learning

A/S Level III required topic: Curriculum & Instruction

The first of its kind in Kentucky, the STEAM Academy’s progressive educational model is enabling the school to provide a transformational educational experience for students of widely varied backgrounds, aptitudes and interests and giving them a jumpstart on their paths to college and careers.

Brian Buckner, associate/senior project architect, RossTarrant Architects; Justin Bathon, director, UK Center for Next Generation Leadership

B9 Passing a Recallable Double Nickel During a Pandemic

A/S Level II required topic: School Facilities

Paris Independent Schools superintendent and school board chairwoman will share the steps they took to pass a recallable double nickel with little opposition in the midst of a pandemic.

Stephen McCauley, superintendent, Angela Plummer, board member, Paris Independent Schools

C1 Finance II: Dollars and Sense

Counts toward mandated finance training requirements
A/S Level II required course

F Participants learn about the budgetary process and how to provide guidance and oversight of a fiscally responsible budget that supports the mission of the district. Learn about the different funding sources, including restricted and discretionary funds, about asking the right questions, finance reports, timelines and how to identify budget “leaks.”
KSBA Training Cadre

C2 How Much Do Your Site Base Allocations Cost?

Counts toward mandated finance training requirements
A/S Level III required topic: Finance

F Employees are your most important asset, but they don’t come cheap! This session will focus on the district’s annual site base allocations, including the applicable laws, timelines and pitfalls to watch out for in developing the staffing policies pertaining to the allocations
KSBA Training Cadre

C3 Breaking Terrible Board Habits Part 2

Counts toward mandated ethics training requirement.
A/S Level I required topic: Ethics

E Session 2 on the book “How Not to Be a Terrible School Board Member,” by Richard Mayer, includes discussion on more of his recommendations about how to avoid being that board member who is less effective because of bad habits and poor reactions. While the book does highlight negative behaviors, it suggests choices board members can make in various circumstances that can have positive – not terrible – results. Mayer is a current, long-time board member and educational psychologist.
KSBA Training Cadre

C4 Superintendents Leading Beyond the District Boundaries

Meets mandated superintendent evaluation training requirement.
A/S Level III required topic: Legislative Issues/Current Topics

S Times have changed. With the rise of social media and a state legislature that is more active than in the past, the role of the superintendent in leading not only their own district’s schools, but positively impacting the evolution of all public schools has become a major part of the job. This is critically important, which is why one of the seven standards of the KSBA superintendent evaluation system revolves around influential leadership at the local, state and federal levels to impact the policies affecting political, social, economic, legal, cultural and ethical aspects of public education. This session is a deep dive on Standard 7 of the evaluation framework and explores how superintendents and boards can and must work together to influence the laws that govern our schools.
Eric Kennedy, director of advocacy, KSBA

C5 Between the Hedges: Managing Policy Revisions Between Updates

A/S Level I required course: The Board’s Policy Making Role
This session addresses the process for making revisions to local board policies and procedures outside of the KSBA Annual Update which is sent to districts each spring.
Katrina Kinman, director of policy, KSBA

C6 The Evolving World of Cyber Liability in Public Education

A/S Level III required topic: Liability Issues, Insurance & Risk Management

Cyber insurance coverage in public education is evolving at a very rapid pace. With ransomware on the rise, new information technology security measures required for the placement of coverage and increasing insurance premiums, our panel will educate attendees on how their districts can most effectively identify cyber risks and prepare their school systems for the upcoming cyber renewal.

Joe Davis, cyber practice leader, David Brooks, vice president, Houchens Insurance Group

C7 Enhancing Impact Through Adaptive Leadership

A/S Level II required topic: Student Learning & Support Services
Adaptive Leadership is a practical leadership framework that helps individuals and organizations adapt and thrive in challenging environments. The session includes a poster gallery walk with cartoons from the chapter headings in the book “Your Leadership Edge” to initiate discussions around adaptive challenges board members are facing in their districts.
Bart Flener, executive director, Green River Regional Educational Cooperative

C8 Stories of Impact: Can Family School Community Engagement (FSCE) Really Impact Your School Ecosystem? Yes, It Can!

A/S Level I required topic: Staff/Media/Community Relations
The design of the traditional family engagement model is compliance conditions. Compliance conditions keep people in “lanes” or “silos.” The design of the ParentCamp model is to flip family engagement – equality conditions and purpose. ParentCamps lead schools to the holy grail of family-school community engagement which is FSCE collective efficacy.
Julia Pile, president, Laura Gilchrist, vice president, ParentCamp

C9 Stronger Together: How Collaboration Can Help Strengthen Districts

A/S Level III required topic: Leadership through Teamwork
Connect the dots with your neighboring school districts. Hear how two neighboring districts work together and share information in order to improve the work of each district.
Phil Baker, board member, Logan County Schools; Davonna Page, board member, Russellville Independent Schools



Denotes session counts toward mandated finance training requirement



Denotes session meets mandated ethics training requirement



Denotes session meets mandated superintendent evaluation training requirement

CLINIC SESSIONS D

Saturday, Feb. 26
2 – 3:15 p.m.

D1 Finance III: Dollars and Decisions

Counts toward mandated finance training requirements

A/S Level III required course

F This session extends the budgeting and resource allocation down to the students. Participants learn how school boards can support district goals and prioritize allocation of resources to drive student achievement, and how policy and discretionary decisions impact instructional quality, classroom sizes, and instructional material. The session covers the decision-making process from student data disaggregation, to identifying needs and prioritizing allocation of funds. Other topics include school resource allocations, data-driven decision making, staffing formulas, and procurement laws and policies.

KSBA Training Cadre

D2 How to Maximize Federal Dollars

Counts toward mandated finance training requirements

A/S Level III required topic: Finance

F This session helps boards to better understand federal revenue, how it can be spent and the best way to spend the funds in order to get the biggest bang for your buck! There will be an emphasis on the CARES Act and CRRSA coronavirus relief money including ESSER and GEERS funds.

KSBA Training Cadre

D3 Equity and the Role of Leadership: Policy & Practice

Counts toward mandated ethics training requirement.

A/S Level I required topic: Ethics

One of the most salient factors for student achievement in a school district is effective leadership. But effective leadership without equitable policies and practices can limit student achievement. This session examines education equity and cultural competency and how these concepts impact teaching and learning. Strategies to develop equity policies at the school board level will also be provided.

KSBA Training Cadre

D4 Superintendent Evaluation: Exploring the Seven Standards

Meets mandated superintendent evaluation training requirement

A/S Level II required topic: Superintendent Evaluation

S This session goes deeper into the relevance of the standards to be used when school board members conduct the required annual evaluation of the superintendent. How do we judge performance on such wide-ranging standards for performance? How can boards provide productive input to superintendents to ensure continuous improvement? We will review the standards and discuss examples from the audience on how we can ensure annual reviews provide a path for successful school district leadership.

KSBA Training Cadre

D5 Legislative Update

A/S Level III required topic: Legislative Issues/Current Topics

The 2022 Regular Session of the General Assembly will be in full swing during the Annual Conference. In this session, Eric Kennedy, KSBA's director of Advocacy, will update board members on the status of key legislation affecting them, their students and public education in our Commonwealth.

Eric Kennedy, director of Advocacy, KSBA

D6 Open Meetings Act Update

A/S Level III required topic: Legal Issues

KSBA Staff Attorney John Powell will use KSBA's recently updated "School Districts and the Open Meetings Act" as the frame of reference for an update on the most important statutory, administrative and case law Open Meetings Act developments that school district leaders need to know.

John Powell, staff attorney, KSBA

D7 Digital Playbook for Family and School Partnerships: What is the Board's Role?

A/S Level I required topic: The Board's Role in Student Achievement

School board members in Kentucky play critical roles in building effective family and school partnerships in Kentucky. Participants in this session will learn about groundbreaking new family engagement resources and leave with specific strategies for strengthening family partnerships through board service.

Brooke Gill, director of family engagement, Prichard Committee; Kathy Burkhardt, senior director, NaviGo College and Career Prep, Learning Grove

D8 PEAK Award: Ignite Institute

A/S Level II required topic: Student Learning & Support Services

Learn how the 2021 KSBA PEAK Award winners help scholars develop critical thinking, empathy, problem solving and collaboration skills to recognize their potential and achieve their dreams. Representatives of Boone County Schools and Kenton County Schools will discuss how the Ignite Institute got started and what continues to make it successful.

Matthew Turner, superintendent, Boone County Schools; Henry Webb, superintendent, Kenton County Schools

D9/E9 Board and Superintendent: Developing the Team

(3 hour session)

A/S Level IV required topic: Exemplary Leadership Strategies

Learn more about your teammates as you participate in conversations to improve your relationships, develop guidelines for working together as a team and assess future needs as a team to meet the challenges and issues facing your district.

KSBA Training Cadre

E1 How to Get a Good Night's Sleep as a Board Member

Counts toward mandated finance training requirements

A/S Level III required topic: Finance

F A school board member often attends one meeting a month, yet the business of the school system is 24/7. So, how does a board member sleep well at night knowing the business of the school system is being done efficiently and effectively? By developing, maintaining, and monitoring the policies and procedures of the district. This session will focus on internal and external fiscal controls that boards should assure are implemented in their district.

KSBA Training Cadre

E2 Narratives versus Numbers

Counts toward mandated finance training requirements

A/S Level III required topic: Finance

F In today's environment, we tend to want the latest information and make decisions based on what's most current on our minds. This session will focus the impact that understanding the history of the numbers and viewing decisions with a wider lens can have on decision making.

Christopher C. McIntyre, chief finance officer/treasurer, Warren County Schools

E3 The Ethical Edge: School Board Members and Their Constituents

Meets mandated ethics training requirement

A/S Level I required topic: Ethics

E Handling constituent requests can be a simple matter – or a much tougher call, often involving ethical choices for the elected board member. The materials for this class are based on more than two decades of observing and counseling board members with some often-dicey situations for “servant leaders.”

KSBA Training Cadre

E4 Introduction to Superintendent Evaluation

Meets mandated superintendent evaluation training requirement

A/S Level II required topic: Superintendent Evaluation

S One of your most important roles as a school board member is to hire and evaluate a superintendent. Regular assessment of your CEO is meant to be a constructive process so that the school district can meet the ambitious goals you have set. This session introduces the basics of superintendent evaluation, so that you can step into this year-round process understanding best practices as well as what Kentucky law requires.

KSBA Training Cadre

E5 Communications Skills for Bridging the Divide

Meets mandated ethics training requirement

A/S Level I required topic: Staff/Media/Community Relations

E What board members say (and how they say it) can inspire or discourage, instill confidence or doubt. Our words can navigate to common ground or they can draw a line in the sand. In this interactive session, learn how bad communications habits undermine your message and discuss techniques for effectively communicating in times of disagreement.

Josh Shoulta, director of communications, KSBA

E6 Legal Orientation I

A/S Level II required course

Come learn what every new school board member needs to understand about the statutory and legal environment in which boards operate. The session includes topics such as the Kentucky Open Meetings Act, board member conflicts of interest, the various legal responsibilities of the board, the role of the superintendent and the Kentucky Open Records Act.

John Powell, staff attorney, KSBA

E7 Be Prepared: If Your Superintendent Left, Would You Know How to Fill the Job?

A/S Level II required topic: Superintendent Selection

At some point, most school superintendents will move on. The average length of service for Kentucky superintendents is now just four years, making selecting a district leader a likely endeavor for board members. Hiring a superintendent is one of a board's most important roles, but, unless you are prepared, it can be daunting to carry out. This session provides practical insight boards should know before filling the top job, including statutes and regulations, basic elements, timelines and considerations in undertaking a search, and developing a contract.

Don Martin, field consultant, KSBA; Dani Bradley, board member, Woodford County Schools

E8 Three Literacy Programs That Get Results Without Breaking the Bank

A/S Level II required topic: Student Learning & Support Services

Learn about three literacy programs designed for maximum results with minimum costs. Read Aloud 15 Minutes emphasizes the importance of reading aloud for 15 minutes a day, Summer Camp Reading is a summer intervention program for struggling readers and Prime Time Family Reading engages families in literacy activities around humanities titles.

Kim Fender, board member, Campbell County Schools; Kendle Bryan, director of partnerships, Read Aloud 15 Minutes National Campaign



Denotes session counts toward mandated finance training requirement



Denotes session meets mandated ethics training requirement



Denotes session meets mandated superintendent evaluation training requirement

CLINIC SESSIONS F

Sunday, Feb. 27
10:30 – 11:45 a.m.

F1 The Biggest Piece of the Budget Pie: Salaries and Benefits

Counts toward mandated finance training requirements

A/S Level III required topic: Finance

F State laws and local board policies call for Kentucky school boards to set the qualifications, duties and compensation for all school district employees. This session helps board members better understand the budget impact of salaries and benefits, salary schedules, staff funding sources, types of salary schedules, additional staff pay, and benefits for both certified and classified staff.

KSBA Training Cadre

F2 The Importance of Open Communication between the Board and Finance Officer

Counts toward mandated finance training requirements

A/S Level III required topic: Finance

F School board members and finance officers require many conversations throughout the year about the district budget and other financial topics. This session will offer strategies and tips for how school board members and finance officers can best communicate about the district's finances by looking at some common questions and answers from varying perspectives.

Christopher C. McIntyre, chief financial officer/treasurer, Kerry Young, board member, Warren County Schools

F3 Board Leadership Essentials: Your Public Image

Counts toward mandated ethics training requirement.

A/S Level I required topic: Ethics

E It's not just the decisions you make as school board members that impact your district, how you do your job also influences the success of your school system. The image you project depends largely on how the governing body – your school board – conducts its public business. Do you inspire your community or do you provide regular examples of dysfunction? Being a public official is not easy; often thankless. But we can make the experience better by adopting productive habits and focusing on becoming a healthy team.

KSBA Training Cadre

F4 Superintendent Evaluation: Setting and Meeting Goals

Meets mandated superintendent evaluation training requirement.

A/S Level II required topic: Superintendent Evaluation

S Staying focused on goals is the secret to success. Too often, we get sidetracked by unexpected events and when we sit down to assess our progress, we realize how little attention we paid to those goals.

Superintendents and boards of education need to agree on annual goals that are relevant and clear, so they can evaluate progress properly. Learn how setting goals as part of the superintendent evaluation process can keep the entire school district on track for success.

KSBA Training Cadre

GETTING THE MOST OUT OF YOUR CONFERENCE

Sessions

All clinics are open to all board members, regardless of experience, and all sessions qualify for Academy of Studies (A/S) general elective credit unless otherwise noted.

Mandated topics

Each year, board members are required to receive training in mandated topics of **Finance, Ethics and Superintendent Evaluation**. Members can earn their mandated hours during this year's Annual Conference with sessions on each topic offered during each of the six clinic breakout sessions, as well as during the pre-conference session. For your convenience, all mandated training courses in sessions A-F are noted with a graphic denoting the topic.

Safety is our top priority

KSBA is working closely with the conference site to ensure a safe event for all in attendance. Measures will be taken to offer an experience in adherence to state and federal public health guidelines. Attendees will be encouraged to do their part to protect themselves and fellow guests from the spread of COVID-19.

**Share your conference experience
on social media by using #KSBA22**



KSBA.org



/ksbanews



@ksbanews

Board training hours available

Pre-conference workshops	3 hours each
Clinic sessions A, B, C, D, E and F	1.25 hours
Opening session	1.25 hours
Lunch/Plenary session	1.25 hours
Brunch session	1.25 hours
Exhibit visitation	0.75 hour

EILA credit pending approval



Friday, Feb. 25
9 a.m. – 3 p.m.
Marriott Downtown Louisville

8:30 a.m. Check in
9 a.m. Meeting begins

Program Highlights:

Your Supporting Cast (Getting to Know the Staff and Services of KSBA)
Ask Your Fellow KOSAA Members (Q&A)
Action! (the New eMeeting Portal)
Agenda and Minutes Tips

Attendees will earn 5 hours of KOSAA credit

COST: \$105 (includes luncheon)

Members may invite their board members, superintendent and/or others to enjoy lunch with us. The cost is \$65 per additional lunch guest. After you register your guest(s), please email Prindle Hinton (prindle.hinton@ksba.org) with their names.

KOSAA registration must be done online at KSBA.org

Deadline for conference registration is Feb. 11. No cancellations, but substitutions allowed.

If you will need lodging, please see hotel reservation instructions on page 4.

The KOSAA Board of Directors will meet at 7 p.m. Feb. 24.
Additional information will be provided later to each director.

For more information about KOSAA, contact Amanda Hale or Prindle Hinton at 1-800-372-2962 or via email at amanda.hale@ksba.org or prindle.hinton@ksba.org



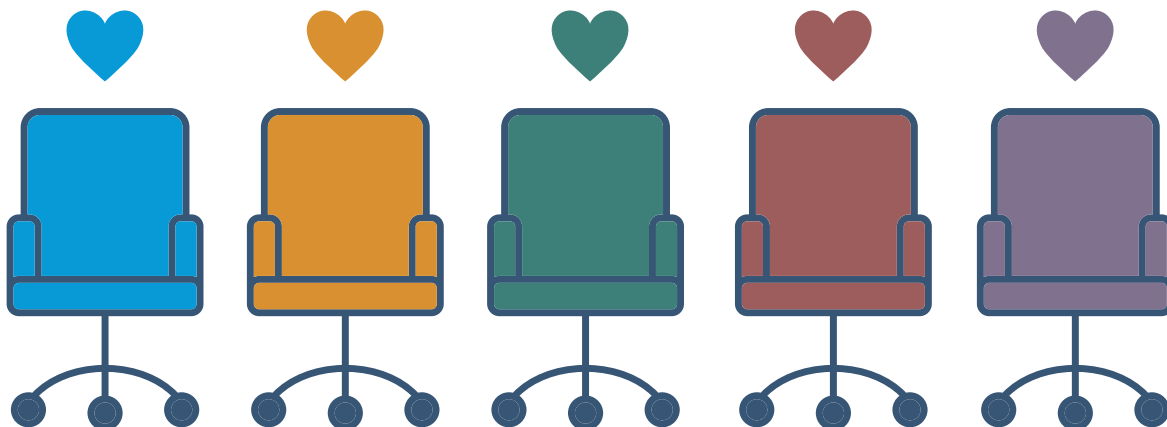
KSBA

260 Democrat Drive
Frankfort, KY 40601

Nonprofit Organization
U.S. Postage
PAID
Permit 850
Lexington, KY

January is
**School Board
Recognition Month**

#LoveKySchoolBoards



Thank you for your service
to Kentucky's students!